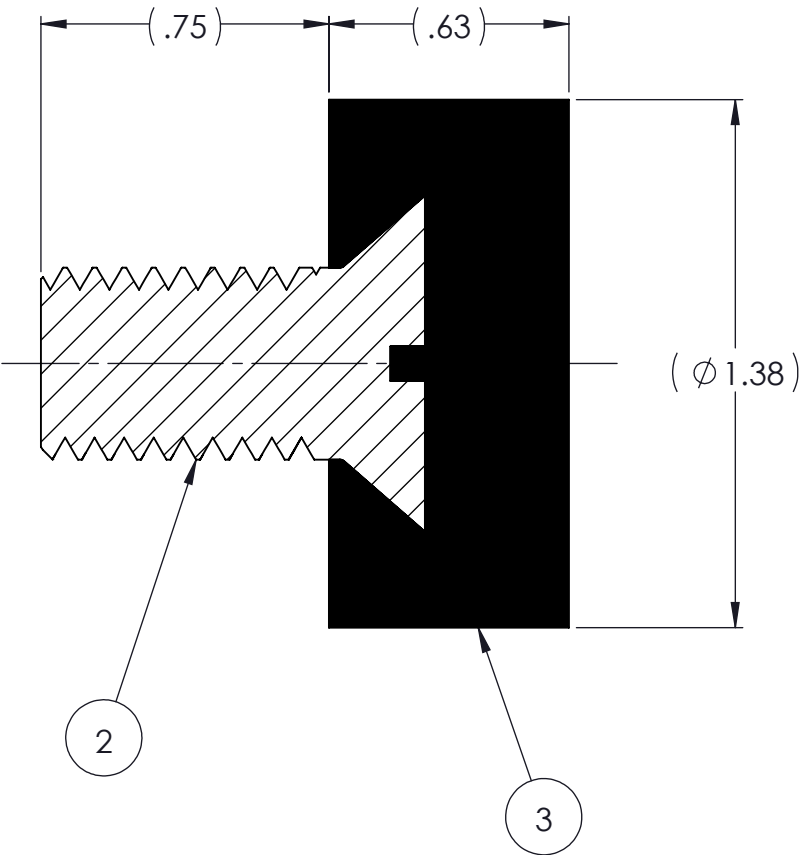
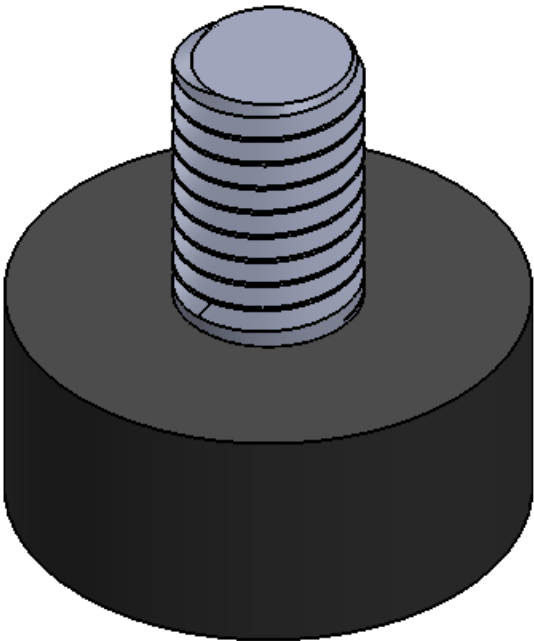


REVISIONS			
REV.	DESCRIPTION	DATE	APPROVED
1	INITIAL RELEASE OF DRAWING	8/8/2014	BS
2	ADD NOTE 3.	8/26/2014	BS



NOTES:

- 1 MATERIAL: ELASTOMER AND DUROMETER OF 40, 50, 60 OR 70 TO BE SPECIFIED.  
2 ALL DIMENSIONS ARE REFERENCE.  
3 AVAILABLE WITH 1/2-13 UNC X 3/4" THREAD.

AR	ELASTOMER	K130-3	1	3
1	MK1600	MK1600		2
	K160	K160		1
QTY.	DESCRIPTION	PART NUMBER	MATERIAL OR NOTES	ITEM

PROPRIETARY AND CONFIDENTIAL <small>THE INFORMATION CONTAINED IN THIS DRAWING IS THE SOLE PROPERTY OF KARMAN RUBBER. ANY REPRODUCTION IN PART OR AS A WHOLE WITHOUT THE WRITTEN PERMISSION OF KARMAN RUBBER IS PROHIBITED.</small>	SIGNATURE		DATE	UNLESS OTHERWISE SPECIFIED: DIMENSIONS ARE IN INCHES TOLERANCES: .X = .XX = ± 0.031 .XXX = ANGLES = ±1° INTERPRET GEOMETRIC TOLERANCING PER: ASME Y14.5M-1994
	DRAWN	B. SENECAL	08/08/2014	
	CHECK	S. BROWN	08/08/2014	
	ENGR	B. SENECAL	08/08/2014	
	QA			
	STRESS			
	APPR			



TITLE: K160 SERIES VIBRO-INSULATOR  
WWW.KARMAN.COM

SIZE <b>B</b>	CAGE CODE	DWG. NO. <b>K160</b>		REV <b>2</b>
		DO NOT SCALE DRAWING	SCALE: 2:1 WEIGHT: 1.45 OZ.	SHEET 1 OF 1